

No.4, April 1-30, 2013



Current Titles Alert

Formerly known as Current Titles Announcement Service



Library & Documentation Unit

National Bureau of Soil Survey and Land Use Planning (NBSS&LUP)

Indian Council of Agricultural Research

Amravati Road, Nagpur-440033

JOURNALS COVERED IN THIS ISSUE

Sr. No.	Title	Vol./ Year	Issue No.
1	Annals of Agricultural Research	33/2012	No. 1, 2, 3 & 4
2	Baliraja	44/2013	No. 3
3	Clays and Clay Minerals	60/2012	No. 6
4	Indian Forester	139/2013	No. 3
5	Indian Forming	62/2013	No. 12
6	Indian Journal of Agricultural Sciences	83/2013	No. 4
7	International Journal of Geoinformatics	8/2012	No. 3
8	Journal of the Geological Society of India	81/2013	No. 4
9	Kheti	65/2013	No. 11
10	Mausam	64/2013	No. 1
11	Soil Science	177/ 2012	No. 12

ANNALS OF AGRICULTURAL RESEARCH

(Organ of the Indian Society of Agricultural Science)

To promote inter-disciplinary research in the field of agriculture and provide a forum for expressing views on policies and programmes relating to agricultural development

CONTENTS

	Page
Productivity and sustainability of soybean (<i>Glycine max</i>) based intercropping systems under rainfed situations of South-Eastern Rajasthan	1
Effect of cultivars and fertility levels on growth and yield of toria (<i>Brassica rapa</i> var. <i>toria</i>) under Tarai region of Uttarakhand	7
Enhancement in the productivity of maize (<i>Zea mays</i> L) through integrated balanced nutrient management in Banswara district	14
Effect of organic manuring on productivity and economics of summer mungbean (<i>Vigna radiata</i> var. <i>radiata</i>)	17
Effect of planting methods and irrigation scheduling on growth, yield and quality of spring planted sugarcane (<i>Saccharum officinarum</i> L.)	21
Effect of tank-mixed herbicides on weeds and transplanted rice (<i>Oryza sativa</i> L.)	25
Effect of sources and levels of sulphur on sulphur uptake, yield and quality of linseed (<i>Linum usitatissimum</i>)	32
Response of different levels of nitrogen, spacing and green fruit picking on growth, fruit yield, seed yield and seed quality of okra [<i>Abelmoschus esculentus</i> (L) Moench]	36
Response of potato to nitrogen and potassium in alluvial soil of South-Western plain zone of Uttar Pradesh	40
Yield and nutrient uptake of fenugreek (<i>Trigonella foenum-graecum</i> L) as influenced by nitrogen, phosphorus and bio-fertilizer	45
Standardization of preserved pulps and its combinations for the preparation of mixed fruit leather	53

ANNALS OF AGRICULTURAL RESEARCH

(Organ of the Indian Society of Agricultural Science)

To promote inter-disciplinary research in the field of agriculture and provide a forum for expressing views on policies and programmes relating to agricultural development

CONTENTS

	Page
Simulating the seepage from lined farm canal under shallow water table condition using HYDRUS 2D	95
Effect of sulphur on growth and yield of sunflower (<i>Helianthus annuus</i> L.) and blackgram (<i>Phaseolus mungo</i> L.) in intercropping system	102
Impact of irrigation levels and mulching on yield and nutrient uptake of okra cultivars under various planting geometry	109
Response of irrigation and fertigation scheduling on flowering, physiological parameters and fruit yield of guava (<i>Psidium guajava</i> L.) under high density planting	115
Performance of rice variety P 1460 in front line demonstrations under rainfed conditions in Southern humid region of Rajasthan	121
Effect of different organic sources on productivity and quality of pearl millet (<i>Pennisetum glaucum</i>) and their residual effect on wheat (<i>Triticum aestivum</i>)	126
Effect of sulphur levels on growth, yield and quality of Indian mustard (<i>Brassica juncea</i>) genotypes	131
Fertility restoration studies in different cytoplasm of pearl millet [<i>Pennisetum glaucum</i> (L.) R. BR.]	136
Residual effect of vermicompost and thiourea on growth and yield attributes of mustard (<i>Brassica juncea</i> L.) in semi arid regions of Agra	143
Response of urea and growth regulators on bearing and quality of "Amrapali" mango	150
Detection of transgressive segregants for quantitative characters in F ₃ generation of in-ovulo cultured interspecific triple cross of cotton viz; colchicid (G. arboreum x G. anomalum) x G. barbandense	157
Integrated weed management in cauliflower cv. 'Pusa Snowball K-1'	163

ANNALS OF AGRICULTURAL RESEARCH

(Organ of the Indian Society of Agricultural Science)

To promote inter-disciplinary research in the field of agriculture and provide a forum for expressing views on policies and programmes relating to agricultural development

CONTENTS

		Page
Climate change vis-a-vis Indian agriculture	<i>J.C. Dagar, A.K. Singh, Rajbir Singh and A. Arunachalam</i>	189
Impact of climate change on soil health	<i>D.K. Benbi</i>	204
Integrated nutrient management on performance of wheat (<i>Triticum aestivum</i> L.)	<i>B.R. Dhaka, Nitin Chawla and A.R.K. Pathan</i>	214
Estimation of heterosis in diverse cytoplasmic male sterile sources of Pearl millet [<i>Pennisetum glaucum</i> (L.) R. Br.]	<i>Alidad Amiribehzadi, C. Tara Satyawathi, S.P. Singh, C. Bharadwaj and Madan Pal Singh</i>	220
Effect of different proportions of vermicompost and fertilizers on growth and yield of scented rice and soil properties	<i>Poornima Malviya, A.K. Jha and V.B. Upadhyay</i>	228
Studies on fibre quality parameters of <i>inovo</i> cultured interspecific triple cross of cotton	<i>Anupama Hingane and S.S. Mehetre</i>	235
Multitier cropping systems for resource conservation and higher productivity in eastern ghat highland zone of Odisha	<i>Praveen Jakhar, Anchal Dass, Susama Sudhishri, B. S. Naik and R.K. Panda</i>	240
Heritability and genetic advance in vegetable pea (<i>Pisum sativum</i> L.)	<i>Nitu Kumari, J.P. Srivastava, S.K. Singh and I.P. Singh</i>	244
Yield gap analysis in rice, wheat and pulses in India	<i>Mahendra Singh</i>	247
Ground water recharge from a lined watercourse under shallow water table condition	<i>V. Goyal, B.S. Jhorar and R.S. Malik</i>	255
Effect of organic matter and lime in remediation of heavy metals (Co, Ni & Pb) in Alfisols	<i>Rakesh Kumar, R. Kumar, K.S. Rawat and Brijesh Yadav</i>	261
Evaluation of marketing channel options for guava in Kota district of Rajasthan	<i>Kailash Chand Bairwa, Rajesh Sharma and Madhu Sharma</i>	266
Recommendations of National Seminar		275

स्थापना १९७०

ज्ञान
योजकता
व कष्टाने
प्रगती होते



आधुनिक व्यापारी शेतीचे मासिक

बळीराजा



वर्ष चव्वेचाळीस / अंक तिसरा / मार्च २०१३

संस्थापक
प्र. बा. भोसले
संपादक
नितीन उर्फ रविंद्र भोसले
कार्यकारी संपादक
श्रीकांत पोहनकर
वितरण / विस्तार विभाग
विजय गोखले
मुख्यपृष्ठ रचना
सचिन कुलकर्णी
मासिक मांडणी
विशाल म. भात
छपाई
कल्पना मल्टीकलर्स, पुणे
मुख्य कार्यालय
एम. आर. अग्रो इन्फॉर्मेटिक्स प्रा. लि. शिवकाशी अपार्टमेंट्स, फ्लॅट नं. ६, दुसरा मजला, शिर्के बंगल्याजवळ, आपटे रोड शेजारी, १२०४, शिवाजी नगर, पुणे - ४११ ००५ फोन नं. ०२०-२५५३२०६५ ०२०-२५५३२१२७ e-mail : agroindiapune@gmail.com agroindiapune@ymail.com balirajamasik@rediffmail.com

लेख योजना

■ संपादकीय	जोडधंदे कशासाठी?	९
■ जागृत वाचकांच्या लेखणीतून		१०
■ जोडधंदे	शेतकऱ्यांची आर्थिक भरभराट करणारा	१३
	उद्योग : मिनी दाल मिल	
	श्री. अभय हनुमंत कुलकर्णी	
■ शेळीपालन	शेळी पालन : एक पूरक व्यवसाय	१६
	श्री. माधवराव श. पाटील	
■ कृषी पर्यटन	कृषी पर्यटन : निसर्ग संवर्धनाकडे मानवाचा प्रवास	१८
	अॅड. विजयराव झोळ	
■ नवे जोडधंदे	एपीथेरपी शेतीस नवीन जोडधंदा	२२
	प्रा. योगेश रमणकांत भोलाणे	
■ शेळीपालन	शेळ्यांमधील बेहत्वाचे जिवाणूजन्य	३१
	रोग आणि उपाययोजना	
	डॉ. यशवंत फुलपगारे, डॉ. निमसे व डॉ. माने	
■ प्रक्रिया	आख्यापासून तयार करत विविध प्रक्रियायुक्त पदार्थ	३४
	प्रा. अमोल खापरे, डॉ. विजय तरडे	
■ मधुमाशापालन	मधुमाशिकांपासून कृषी उत्पादन वाढ	३९
	डॉ. एन. के. भुते, डॉ. के. डी. विसने	
■ शेळीपालन	वेळीघ करा नियंत्रण शेळ्यांमधील	४२
	विषाणूजन्य रोगांचे	
	डॉ. यशवंत फुलपगारे, डॉ. निमसे व डॉ. माने	
■ यशोगाथा	पीकेव्ही माडेल बायोगॅसची यशोगाथा	४५
	श्री. पी. पी. शेळके	
■ प्रतिक्रिया	अचित नरदे	४८

Clays and Clay Minerals

Volume 60 Number 6 December 2012

Contents

Letter to the Editor: Hydraulic characteristics of bentonite cake fabricated on cutoff walls <i>Stephan A. Jeffers and Carlos Lam</i>	557
Changes in structure, morphology, porosity, and surface activity of mesoporous halloysite nanotubes under heating <i>Pang Yuan, Daoyong Tan, Faiza Annabi-Bergaya, Wenchang Yan, Mingjie Fan, Dong Liu, and Hongping He</i>	561
Structures of the 2:1 layers of pyrophyllite and talc <i>Victor A. Drits, Stephen Guggenheim, Bella B. Zviagina, and Toshihiro Kagure</i>	574
An electron paramagnetic resonance spectroscopy investigation of the retention mechanisms of Mn and Cu in the nanopore channels of three zeolite minerals <i>Daniel R. Ferreira, Cristian P. Schuilhess, James E. Amonette, and Eric D. Walter</i>	588
A molality-based BET equation for modeling the activity of water sorbed on clay minerals <i>Jacob G. Reynolds, Cliff T. Johnston, and Stephen F. Agnew</i>	599
Effects of hydrothermal parameters on the synthesis of nanocrystalline zeolite NaY <i>Amir Nour, Mostafa Jafari, Mansour Kozomirghadam, and Toraj Mohammadi</i>	610
Laboratory-simulated diagenesis of nontronite <i>Matthew A. Miller, Andrew S. Madden, Megan Elwood Madden, and R. Douglas Elmore</i>	616
Mineralogy and geochemistry of the sedimentary kaolin deposits from Sinai, Egypt: implications for control by the source rocks <i>Hassan M. Baloumy, H. Albert Gilg, and Heinrich Taubald</i>	633
Determination of the predominant minerals in sedimentary rocks by chemometric analysis of infrared spectra <i>Michal Ritz, Lenka Vaculiková, Evá Plovová, Dalibor Matysck, and Jiri Melis</i>	655
Technical Referees	666
Comprehensive Subject and Author Index, Volume 60, 2012	667
Contents of Volume 60, 2012	i

Annual Sustaining Members, Patrons, and Benefactors of The Clay Minerals Society

Benefactors

Chevron Energy Technology Company (ETC)

Patrons

H.H. Murray & Associates

Thele

Wyo-BMI

Individuals

John D. Borch

Carl L. Bowser

Richard K. Brown

Michael L. Cummings

Rancah T. Ogden

Will P. Gates

Joseph Reed Glasmann

Stephan Guggenheim

Blair F. Jones

David A. Laird

Robert H. Lander

Duann (Dowey) M. Moore

Paul A. Schroeder

Joseph W. Stucki

Andrew R. Thomas

Kenneth M. Towse

Michael A. Velocci

ISSN 0009-8644

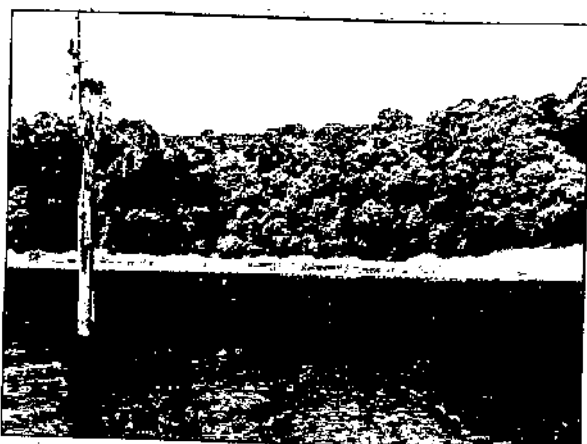
CCM PA60(6)557-675(December)

CONTENTS

ARTICLES	Page No.
Provision of livelihood opportunity in the fringe forest: Some experiences of Tripura S.K. Panda	187
Economic valuation of role of forests in providing water supply to the people of Aizawl, Mizoram, India N. S. Bisht	193
Floristic diversity along an altitudinal gradient in Namgia valley of cold desert in district Kinnaur, Himachal Pradesh R.K. Verma and K.S. Kapoor	202
Nutrient release pattern of decomposed leaf litter in different multipurpose trees Shailendra Bhalawe, M.U. Kukadia and Dileswar Nayak	212
Soil organic carbon stock in mixed oak and mixed pine forest of Kumaon Himalaya Shalini Chaturvedi and Uma Melkania	218
Improvement of <i>Populus deltoides</i> Bart. Ex Marsh. in India - provenance variation and intraspecific breeding N.B. Singh, Dinesh Kumar, Rajesh K. Gupta, Pradeep Kumar and Kadam Singh	222
Effect of auxins on adventitious rooting from hardwood cuttings of <i>Hippophae rhamnoides</i> under Ladakh Himalayas Janifer Raj X. Basant Ballabh, M. Pal Murugan, Priyanka Dhar, Amol B. Tayade, Ashish R. Warghat, O.P. Chaurasia and R.B. Srivastava	228
Effect of pretreatments of seed for enhancing germination of <i>Vitex altissima</i> L. K. Sudhakara and K.R. Veenadevi	232
Effect of gibberellic acid on seed germination and seedling growth behaviour in three desert tree species Renu Dhupper	236
Contribution to the sedge and grass flora of Gujarat Rinku J. Desai and Vinay M. Raole	240
Histological characterization of embryogenic and non-embryogenic calli of <i>Jatropha curcas</i> L. Anjani, Arvind Shukla, Alok Shukla and S. K. Guru	244
Influence of seed pretreatments and sowing conditions on germination and initial seedling vigour of Indian Almond (<i>Terminalia catappa</i> L.) P. Masilamani, P. Yasodha and K. Annadurai	248

Investigations on use of eupatorium (<i>Chromolaena Odorata</i>) as source for vermicompost production and its effect on earthworm population Manjappa, K., Viswanath Jowkin and Nagaraj Katharaki	258
An economic analysis of lac marketing in Kanker district of Chhattisgarh Govind Pal and Bharati Patel	256
Toxicity of some commonly used insecticides against <i>Spilarctia obliqua</i> (Walker) Arvind Kumar, Shiwani Bhatnagar and R. K. Sharma	260
RESEARCH NOTES	
Harnessing alpine Himalaya for <i>in-situ</i> conservation of critically endangered medicinal plant: <i>Dactyloctenium aegyptium</i> (L.) Don Meenakshi Bhardwaj, N.S. Chauhan and L.S. Kandari	264
<i>Fuirena umbellata</i> Rottb. (Cyperaceae): A new record for the flora of Chhattisgarh A.P. Tiwari and A.N. Shukla	267
Record of a lepidopteran pest <i>Isodemis serpentinana</i> (Walker) (Tortricidae: Lepidoptera) on <i>Vateria indica</i> L. in Karnataka N. Mangala, R. Sundararaj and H.C. Nagaveni	269
FROM THE INDIAN FORESTER - ONE HUNDRED YEARS AGO	
Bamboos and the different methods of cutting them - A. Wimbush, IFS	271
VIEW AND EXPRESSIONS	
Need for a code of ethics in forestry research in India R.S.C. Jayaraj	272
LETTER TO THE EDITOR	
Research needs time - R.S.C. Jayaraj	275

FRONT COVER



Evergreen forests of Kerala - Periyar Tiger Reserve

Photo : V.K. Dhawan



Cover I: Pusa Krishi Vigyan Mela 2013

ADVISORY BOARD

Chairman : K D Kokate

Members

• M M Pandey • B Gangwar
• C S Prasad • P Das • Mruthyunjaya

Project Director, DKMA : Dr Rameshwar Singh

Incharge (BEU) : Dr R P Sharma

Editor : Reena Kandwal

Chief Production Officer : Dr V K Bharti

Production : K B Gupta

Senior Artist : Narendra Bahadur

For editorial queries contact

Reena Kandwal
011-2584 1004, 2584 1960 / 613
e mail: indfarm@icar.org.in
indfirm@icar.org.in

For Subscription and Advertisement,
Contact:

SK Joshi

Business Manager, DKMA, ICAR
Krishi Anusandhan Bhavan I, Pusa
New Delhi 110 012
Telephone: 011-2584 3657
Fax: 011-2584 3657
e-mail: bmicar@icar.org.in

Subscription

Single Copy : ₹ 25
Annual : ₹ 250 (Inland)
: \$ 50 (overseas)

Volume 62, No. 12

MARCH 2013



Indian Farming

In This Issue

Editorial	2
Krishi Vigyan Mela – Women Empowerment Workshop	3
Soil moisture conservation agro-techniques for rainfed <i>rabi</i> sorghum <i>J V Patil, J S Mishra, R R Chapke, S R Gadakh and U D Chavan</i>	4
Biofilmed biofertilizers: A novel technology for green agriculture <i>Karivaradharajan Swarnalakshmi, Radha Prasanna, and Anil Kumar Saxena</i>	9
Resource Conservation Technologies for Sustainable Agriculture <i>Ramanjit Kaur and Avtar Singh</i>	13
Unpuddled mechanical transplanting of rice: A way towards conservation agriculture <i>Sanjeev Kumar, P K Sundram, S S Singh and Shivani</i>	21
Spotted Pod Borer: A potential threat to short duration pigeonpea <i>S D Mohapatra and C Chattopadhyay</i>	27
Sisham trees planted with gram in semi-arid agriculture can yield profit <i>A S Gill and Ram Ashray Singh</i>	30

Attention !

- All disputes are subject to the exclusive jurisdiction of competent courts and forums in Delhi/ New Delhi only.
- The Council does not assume any responsibility for opinions offered by the authors in the articles and no material in any form can be reproduced without permission of the Council.
- The Council is not responsible for any delay, whatsoever, in publication/delivery of the periodicals to the subscribers due to unforeseen circumstances or postal delay.
- Readers are recommended to make appropriate enquiries before sending money, incurring expenses or entering into commitments in relation to any advertisement appearing in this publication.
- The Council does not vouch for any claims made by the authors, advertisers of products and service.
- The publisher and the editor of the publication shall not be held liable for any consequences in the event of such claims not being honoured by the advertisers.

THE INDIAN JOURNAL OF AGRICULTURAL SCIENCES

Previous issue : Vol 83, no. 3, pp 241-364



Symptoms produced by CMV on leaf and fruits of *Cucurbita pepo* (page 65)

Vol 83, no. 4

April 2013

CONTENTS

Research Papers

- | | | |
|--|--|-----|
| Genetic transformation in oilseed brassicas - A review | Teena Rani, Ram C Yadav, Neelam R Yadav, Asha Rani and Dhiraj Singh | 367 |
| Development of high yielding morphologically improved strains of <i>Pleurotus</i> through interspecific hybridization | Ravinder K Jaswal, Harpreet S Sodhi, S Kapoor and Pradeep K Khanna | 374 |
| Retrieval of Leaf Area Index using IRS-P6, LISS-III data and validation of MODIS LAI product (MOD15 V5) over trans Gangetic Plains of India | Rahul Tripathi, R N Sahoo, V K Gupta, V K Sehgal and P M Sahoo | 380 |
| CP-HSP gene transcribe in rice (<i>Oryza sativa</i>) under heavy metal stress | Y Shakir, A Mannan and S Shakeel | 386 |
| Integrated nutrient management in Quality Protein Maize (<i>Zea mays</i>) planted in rotation with wheat (<i>Triticum aestivum</i>): Effect on productivity and nutrient use efficiency under different agro-ecological conditions | S L Jat, C M Parihar, A K Singh, M L Jat, A K Sinha, B N Mishra, H Meena, V K Paradkar, C S Singh, Dilip Singh and R N Singh | 391 |
| Molecular markers of Ryadg gene and serological assay reveal potato virus Y (PVY) resistance in the tetraploid Indian potato (<i>Solanum tuberosum</i>) germplasm | Jagesh K Tiwari, S K Pandey, Poonam, S K Chakrabarti, J Gopal and Vinod Kumar | 397 |
| Fenugreek (<i>Trigonella foenum-graecum</i>) plant types influenced by agro-chemicals and sulphur fertilization under different crop geometries | G S Bocharia, R C Tiwari, B Ram and S R Kantwa | 402 |
| Influence of sowing time and leaf cuttings on the seed yield and quality components of palak (<i>Beta vulgaris</i> var <i>bengalensis</i>) | Rajinder Singh, Geeta Bassi and Dilbag Singh | 410 |
| Antioxidant phytochemicals and curcuminoides content in different genotypes of turmeric (<i>Curcuma longa</i>) | S K Sanwal, B C Deka and Marcin Kozak | 415 |
| Straw composting using earthworm (<i>Eudrilus eugeniae</i>) and fungal inoculant (<i>Trichoderma viridae</i>) and its utilization in rice (<i>Oryza sativa</i>)-groundnut (<i>Arachis hypogaea</i>) cropping system | S K Sarangi and T D Lama | 420 |

Identification of viruses and screening of summer squash (<i>Cucurbita pepo</i>) germplasm against viral disease under controlled conditions	Manju Sharma, P D Thakur, Dharmesh Gupta and A K Thakur	426
Genetic variability for total carotenoid concentration in selected tropical maize (<i>Zea mays</i>) inbred lines	R Sivaranjani, B M Prasanna, F Hossain and I M Santha	431
Removal of tenacious glumes enhances the seed germination and seedling vigour in eight <i>Aegilops</i> species for efficient conservation in genebank	K Srinivasan, J Radhamani, T Kalkande and R K Tyagi	437
Genetic diversity of maize (<i>Zea mays</i>) hybrids based on protein analysis in different conditions	Anjali Chaudhary and Rashmi Yadav	441
Microbial dynamics and physico-chemical properties of soil in the rhizosphere of chrysanthemum (<i>Dendranthema grandiflora</i>) as influenced by integrated nutrient management	Nomita Laishram, S R Dhiman, Y C Gupta, S K Bhardwaj and Arvinder Singh	447
Short Communications		
Influence of NPK, S and variety on growth, yield and quality of irrigated linseed (<i>Linum usitatissimum</i>)	D N Singh, J S Bohra and J K Singh	456
First report of a commonly prevalent termite <i>Heterotermes indicola</i> from Delhi region	G K Mahapatro and Sachin Kumar	459
A real-time quantitative PCR assay for specific and sensitive detection of <i>Phytophthora infestans</i> on tomato	P Chowdappa, B J Nirmal Kumar, S Madhura, B Reddi Bhargavi and H Sandhya	463
High temperature tolerance in chickpea (<i>Cicer arietinum</i>) genotypes as evaluated by membrane integrity, heat susceptibility index and chlorophyll fluorescence techniques	Neeraj Kumar, A S Nandwal, R S Waldia, S Kumar, S Devi, S Singh and P Bhasker	467
Effect of sulphur and iron fertilization on yield attributes, yield and nutrient uptake of mungbean (<i>Vigna radiata</i>)	K K Meena, R S Meena and S M Kumawat	472

INTERNATIONAL JOURNAL OF GEOINFORMATICS

Volume 8, No. 3, September, 2012

ISSN 1686 - 6576

Geospatial Relationship between Altitude and Mortality in India Hsiao, C. Y., Jha, P., Gambhir, S. and Fu, S. H.....1	Author Information8
Space-Time Analysis Tools of Dengue Epidemics in Chachoengsao Province, Thailand Jeefoo, P.....9	Product Sale Form.....14
Geospatial Analysis of Typhoid and Malaria Prevalence and their risk factors in Rawalpindi City, Pakistan Aziz, N. and Ahmad, S. S.....15	Membership / Subscription Information.....24
Project Management in Health GIS Boonda, R.....25	Membership / Subscription Form30
Application of GIS to Analyze Health Status of Selected Communities Kalasin Province, Thailand Mahaveerawat, U., Yangyuen, S., Khamphilung, S., Somdee, T., Songklang, S., Wech-O-sotsakda, C., Thongkrajai, P. and Pichainarong, N.....31	GIT4NDM 2012 Registration Form.....38
Emerging Methods in using GIS to Analyse Barmah Forest Virus Disease in Queensland, Australia Naish, S., Mengersen, K. and Tong, S.....39	Events Calendar.....65
Developing a Statistical Dengue Risk Prediction Model for the State of Delhi Based on Various Environmental Variables Bhardwaj, A., Sam, L. C., Joshi, P. K. and Sinha, V. S. P.....45	
Geographic Information System of Fish-borne Parasitic Zoonoses Metacercaria from Water Reservoirs under His Majesty's Recommended Project, Phitsanulok, Thailand Nithikathkul, C., Wongsaraj, T., Buntitov, V. and Limsomboon, J.....53	
Geographic Information of Helminthiasis in Thailand Wongsaraj, T., Nithikathkul, C., Reungsang, P., Royal, L., Nak ai, W., Kraikas, D., and Ramasoota, P.....59	

International Journal of Geoinformatics (IJG) is a peer reviewed journal and has an International Editorial Board. It is published four times a year: March, June, September and December.

It is cited by many renowned indexing and abstracting services such as SCOPUS, Elsevier GEOBASE, EBSCO, Geoscience Australia, British Library, Google Scholar, Swets and GIS Development. Past issues older than one year are available "Free" online: <http://www.j-geoinfo.net>

For any general query please contact us at:
**INTERNATIONAL JOURNAL OF
GEOINFORMATICS**
165/520, Moo 5, Tiwanon Road, Bangkadi District
Muang, Pathumthani - 12000, Thailand
Tel: +66-2-563-9148

Send all your inquiries, to contact for advertising and subscription at: progeoinfo@gmail.com

Content

JOURNAL of THE GEOLOGICAL SOCIETY OF INDIA

(Abstracted/Indexed in AGI's Bibliography and Index of Geology, Chemical Abstracts, Current Contents, GEOBASE, GEORef, Mineralogical Abstracts, GeoArchive, Thomson ISI database (SCIE, CC/PC & FS))

Vol. 81

APRIL 2013

No. 4

CONTENTS

RESEARCH ARTICLES

Basnaesite from Kanigiri Granite, Prakasam District, Andhra Pradesh. G. NAGENDRA BABU, M. SAI BABA, MARY K. KUMAR, YAMUNA SINGH, P.V. RAMESH BABU and P.S. PARIHAR	447
Field and Textural Relationship in Pelitic Schists and Gneisses from the Area around Mangpu, Darjeeling District, West Bengal. D. PRAKASH and S. TEWARI	451
A Simple Chemical Resistant Hotplate for Geochemical Applications. K. GOPALAN	455
Neotectonic Response of the Godavari and Kaddam Rivers in Andhra Pradesh, India: Implications to Quaternary Reactivation of Old Fracture System. S.J. SANGODE, D.C. MESHRAM, Y.R. KULKARNI, S.S. GUDADIJE, D.B. MALPE and M.A. HERLEKAR	459
Role of Geophysical and Hydrogeological Techniques in EIA Studies to Identify TSDF Site for Industrial Waste Management. SAHEBRAO SONKAMBLE, S. SETHURAMA, K. KRISHNAKUMAR, PURUSHOTTAM DHUNDE, B. AMARENDER and V. SATISH KUMAR	472
Exhumation and its Mechanisms: A Review of Exhumation Studies in the Himalaya. VIKAS ADLAKHA, R.C. PATEL and NAND LAL	481
Implications of Geochemistry in support of Palaeo-Proterozoic Tectonothermal Evolution of Bhopalpatnam Granulite Belt, Bastar Craton, Central India. SANDEEP VANSUTRE, K.R. HARI and NCEERAJ VISHWAKARMA	503
Middle Eocene Ostracoda from the Tadkeshwar Lignite Mine, Cambay Basin, Gujarat. M.L. NAGORI, S.C. KHOSLA and S.R. JAKHAR	514
Hydrogeophysical Investigations in a Typical Khondalitic Terrain to Delineate the Kaolinised Layer using Resistivity Imaging. B. VENKATESWARA RAO, Y. SIVA PRASAD and K. SRINIVAS REDDY	521
Palaeoecological Implications of Corallineacean Red Algae and Halimedacean Green Algae from the Prang Formation of South Shillong Plateau, Meghalaya. AMIT K. GHOSH and SUMAN SARKAR	531
Velocity of Ground Water Percolation at Indaram, Godavari Sub-Basin, India. MOHAN L. GUPTA and S.R. SHARMA	543
First Report of <i>Ranikothalia</i> Caudri from Middle Andaman Island, India and its Significance. TARUN KOLEY and K.M. WANJARWADKAR	549

Intrusion and Upliftment of Mahakoshal Rocks Between Vindhyan and Gondwana in Narmada Son Lineament, Central India. G.K. GHOSH and C.L. SINGH	556
Comments on <i>Placenticerias mintoi</i> (Vredenburg, 1906) from the Bagh Beds (Late Cretaceous), Central India with Special Reference to Turonian Nodular Limestone Horizon. ANAND K. JAITLEY and RAHUL AJANE	565
Hydrocarbon of Source Rocks Evaluation Study of Lokichar Basin, Northwestern Kenya. B.K. ROP and A.M. PATWARDHAN	575
Determining the Best Search Neighbourhood in Reserve Estimation, using Geostatistical Method: A Case Study Anomaly No 12A Iron Deposit in Central Iran. MARZEIHE SHADEMAN KHAKESTAR, HASSAN MADANI, HOSSEIN HASSANI and PARVIZZ MOAREFVAND	581

BOOK REVIEW

Precambrian Rocks of Northeast India by Bipul Chandra Barooah. Reviewed by MAIBAM BAIDYANANDA	586
---	-----

DISCUSSION

Late Quaternary Deformation and Palaeoseismicity: Insight into Geomorphotectonic Evolution of Kachchh, Western Indian Subcontinent.	
Comment: A.K. SAXENA	587
Reply: A.B. ROY, ALOKESH CHATTERJEE and N.K. CHAUHAN	587

NEWS AND NOTES

Field Workshop on Deformation Style in the Great Boundary Fault Zone around Chittaurgarh, Rajasthan. MANISH A. MAMTANI	588
Report on National Seminar on 'Coastal Environments & their Management and Workshop on GIS Software. VIPIN JOSEPH MARKOSE and E. DEEPIKA	588
Traditional and Modern Approaches to Plant Taxonomy. SANDHYA MISRA	590
Polularization of Science. V.K. KHANNA and D.K. TREHAN	590

Monthly Meeting of the Society on 24 April 2013

Hydrogeology of the Deccan Traps – Raymond A. Duraiswami

Cover

Hand specimen of corundum bearing aluminous gneisses from BGB showing corundum porphyroblasts.

ADDRESS OF EDITOR

All papers intended for publication and also related correspondence should be addressed to: B. Mahabaleswar, Editor, Geological Society of India, No.63, 2th Cross, Basappa Layout, Gavipuram P.O., P.B. No. 1922, Bangalore - 560 019. Email: editorjournalgsi@gmail.com; jgsi.journal@gmail.com; Mobile: 09341264052; Telefax: 080-26613352; Telephone: 080-22422943; Website: <http://www.geosocindia.org>.



खेती

(कृषि चर्चात्मक समाहित)
कृषि विज्ञान द्वारा ग्रामोत्थान
की मासिक पत्रिका

वर्ष : 65, अंक : 11, फरवरी 2013
माघ-फाल्गुन 1933 शक

E-mail: khetidipa@gmail.com

संपादन सलाहकार समिति

- | | |
|--|---------|
| 1. डॉ. के.डी. कोकाटे | अध्यक्ष |
| श्री-महाविदेशिक, कृषि प्रसार
भारतीय कृषि अनुसंधान परिषद, नई दिल्ली | |
| 2. डॉ. ओ.पी. दुबे | सदस्य |
| पूर्व सहायक महाविदेशिक
भारतीय कृषि अनुसंधान परिषद, नई दिल्ली | |
| 3. डॉ. ओ.पी. सिंह | सदस्य |
| विदेशिक प्रसार, सदाहर कस्तूर भाई पटेल कृषि
एवं प्रौद्योगिकी विश्वविद्यालय, मेरठ | |
| 4. श्री विजय कुमार | सदस्य |
| प्रबंध निदेशक
राष्ट्रीय नागरिकी बोर्ड | |
| 5. डॉ. बी.बी. भवामते | सदस्य |
| कृषि सलाहकार | |
| 6. श्री इश्वर सिंह | सदस्य |
| कृषि पत्रकार | |
| 7. श्री राजकुमार नागरथ | सदस्य |
| प्रगतिशील किसान | |
| 8. डॉ. कुलदीप शर्मा | सदस्य |
| संपादक (हिन्दी) | |

संपादक : कुलदीप शर्मा

सहायक संपादक : जगदीप सक्सेना

उप संपादक : अशोक सिंह

प्रधान प्रोडक्शन अधिकारी : वीरेन्द्र कुमार भारती

तकनीकी अधिकारी : अशोक शास्त्री

वरिष्ठ कलाकार : नरेन्द्र बहादुर

लेआउट डिजाइन

वीरेन्द्र कुमार भारती

अशोक शास्त्री

व्यवसाय सम्पर्क सूत्र

सुनील कुमार जोशी

व्यवसाय प्रबंधक

दूरभाष : 011-25843657

E-mail: bmicar@icar.org.in

भारतीय कृषि अनुसंधान परिषद

कृषि अनुसंधान भवन, पूसा गेट, नई दिल्ली-12

एक प्रति: रु. 25.00 वार्षिक: रु. 250.00

खेती



इस अंक में

- | | |
|-------------------|--|
| 2 | संपादकीय
जगदीप सक्सेना |
| 3 | विचार : खाद्य सुरक्षा के गौरवपूर्ण प्रयास
डॉ. एस. अय्यप्पन |
| 6 | तकनीक : पीली हल्दी का सुनहरा उत्पादन
सुनील कुमार, बी. गंगवार और प्रेम प्रकाश मिश्रा |
| 10 | आगदनी : बसंतकालीन सूरजमुखी उगाकर लाभ कमाएं
डॉ. महेन्द्र सिंह पाल |
| 13 | सफलता की गाथा : धान, आलू और प्याज के उत्पादन में एक नया रिकॉर्ड
बृजलाल यादव |
| 15 | साक्षात्कार : दूसरी हरित क्रांति से होगी धान पैदावार में वृद्धि
संदीप दास |
| 18 | फोटो फीचर : भारतीय विज्ञान कांग्रेस के 100वें सत्र में आईसीएआर
डॉ. जगदीप सक्सेना |
| 22 | उद्यम : मौनपाल स्वरोजगार का आधार
ललित उपाध्याय, अनाम उपाध्याय और विकास टंडन |
| 24 | अध्ययन : धान का उन्नत बीज उत्पादन एवं आर्थिक विश्लेषण
डॉ. संजय सिंह, डॉ. रमेश चन्द और संदीप कुमार लाल |
| 30 | योजनाएं : पूर्वोत्तर राज्यों के लिए लाभकारी बकरी पालन
रमेश चन्द्रा, एल.आर. चटलोड और सरोज दोषा |
| 33 | पोषण : ऑर्किड से पोषण
रयामती चक्रवर्ती, सुदीप कुमार जैन और आर.पी. मेधी |
| 36 | स्वास्थ्य : पोषक तत्वों का भण्डार-जौ
सोहन नरवाल, दिनेश कुमार और आर.पी.एस. चर्मा |
| 39 | उपाय : मेहू का बीजोत्पादन आय वृद्धि का स्रोत
एम.पी. सिंह, आर.पी. साहू और विजय अविनाशी लिंगम एन.ए. |
| आवरण
II और III | आईसीएआर की सक्रिय पहल से सुनिश्चित होगी खाद्य, पोषण और आजीविका
सुरक्षा : श्री शरद पवार |

CONTENTS

	<i>Pages</i>
EDITOR'S NOTE	<i>i</i>
FROM THE GUEST EDITORS	<i>iii</i>
PAPERS	
FDP OBSERVATIONAL ASPECTS	
Outcomes and challenges of Forecast Demonstration Project (FDP) on landfalling cyclones over the Bay of Bengal – <i>M. Mohapatra, D.R. Sikka, B. K. Bandyopadhyay and Aji Tyagi</i>	1
Large-scale characteristics of rapidly intensifying tropical cyclones over the Bay of Bengal and a Rapid Intensification (RI) index – <i>S. D. Kotal and S. K. Roy Chowdhuri</i>	13
Comparison of best track parameters of RSMC, New Delhi with satellite estimates over north Indian Ocean – <i>Suman Goyal, M. Mohapatra and A. K. Sharma</i>	25
Rain drop size distribution characteristics of cyclonic and north east monsoon thunderstorm precipitating clouds observed over Kadapa (14.47° N, 78.82° E), Tropical semi-arid region of India – <i>S. Balaji Kumar and K. Krishna Reddy</i>	35
CASE STUDIES OF TROPICAL CYCLONE	
Barotropic energetics analysis of tropical cyclone Khai Muk – <i>S. Balachandran</i>	49
Track, intensity and few dynamical aspects of 'Aila' as simulated by operational NWP model of the IAF – <i>T. P. Srivastava and Amit Dewant</i>	59
A case study for cyclone 'Aila' for forecasting rainfall using satellite derived rain rate data – <i>Habibur Rahaman Birwas, P. K. Kundu and D. Pradhan</i>	77
Studies on VLF atmospherics during the tropical cyclone "AILA" and several monsoon period thunderstorms over north-east India – <i>Rakesh Roy, Anirban Guha, Barin Kumar De and Abhijit Choudhury</i>	83
RADAR AND SATELLITE STUDIES	
Observational aspects including weather radar for tropical cyclone monitoring – <i>S. Raghavan</i>	89
Recent advances in observational support from space-based systems for tropical cyclones – <i>R. C. Bhatia and A. K. Sharma</i>	97
Estimation of intensity of tropical cyclone over Bay of Bengal using microwave imagery – <i>T. N. Jha, M. Mohapatra and B. K. Bandyopadhyay</i>	105
MODELLING	
A study on high resolution mesoscale modeling systems for simulation of tropical cyclones over the Bay of Bengal – <i>U. C. Mohanty, Krishna K. Osuri and Sujata Pattanayak</i>	117
Impact of cyclone bogus and regional assimilation on tropical cyclone track and intensity predictions – <i>Manjusha Chourasia, R. G. Ashru and John P. George</i>	135
Tropical cyclone Genesis Potential Parameter (GPP) and its application over the north Indian sea – <i>S. D. Kotal and S. K. Bhattacharya</i>	149
A preliminary study about the prospects of extended range forecast of tropical cyclogenesis over the north Indian Ocean during 2010 post-monsoon season – <i>D. R. Pattanatk, M. Mohapatra, B. Mukhopadhyay and Aji Tyagi</i>	171
Ocean atmospheric coupled model to estimate energy and path of cyclone near the coast – <i>Ramkrishna Datta</i>	189
Numerical simulation of storm surge associated with severe cyclonic storms in the Bay of Bengal during 2008-11 – <i>S. K. Dube, Jismy Paulose and A. D. Rao</i>	193
Weather in India	
Winter Season (January-February 2012)	203

SOIL SCIENCE

An Interdisciplinary Approach to Soils Research

DECEMBER 2012

CONTENTS

Vol. 177 No. 12

CHARACTERISTICS OF SOIL WATER-SOLUBLE ORGANIC C AND N UNDER DIFFERENT LAND USES IN ALASKA	683
<i>Aiqin Zhao, Mingchu Zhang, and Zhongqi He</i>	
PHYSICOCHEMICAL AND SPECTROSCOPIC CHARACTERISTICS OF CHARRED PLANT FRAGMENTS IN JAPANESE VOLCANIC ASH SOILS	695
<i>Syusaku Nishimura, Nobuhide Fujitake, Syuntaro Hiradate, and Haruo Shindo</i>	
ENVIRONMENTALLY RELEVANT PHOSPHORUS RETENTION CAPACITY OF SANDY COASTAL PLAIN SOILS	701
<i>Debolina Chakraborty, Vimala D. Nair, Willie C. Harris, and Roy D. Rhue</i>	
DEVELOPMENT OF A VARIABLE-SOURCE N FERTILIZER MANAGEMENT STRATEGY USING ENHANCED-EFFICIENCY N FERTILIZERS	708
<i>Peter P. Motavalli, Kelly A. Nelson, and Sougata Bardhan</i>	
STUDY ON DISTRIBUTION OF WIND-ERODED SEDIMENT ABOVE BARE FURROWS BASED ON THE PRINCIPLE OF MAXIMUM ENTROPY	719
<i>Chunxia Zou, Xiangdong Shen, Hongyun Li, Xiazi Li, and Graeme D. Buchan</i>	
TO OUR MANUSCRIPT REVIEWERS	725
<i>Beth Ravit</i>	